

GE Healthcare

Hammersmith Imanet™



Hammersmith Imanet™

Hammersmith Imanet™ is a part of GE Healthcare's international network of leading imaging research centers. Imanet provides pharmaceutical companies with imaging solutions to accelerate the development of novel therapeutics.

Imanet's services are built around **Positron Emission Tomography (PET)**, a powerful, quantitative imaging technology that provides information on biochemical, and physiological processes, and drug-receptor interactions at a molecular level. PET, combined with tracer kinetic models, measures blood flow, membrane transport, metabolism and ligand-receptor interactions non-invasively and quantitatively in humans.

The center is located at Hammersmith Hospital, London, UK and began as the world's first medical cyclotron. Hammersmith Imanet was formed in 2001 and is a joint venture between the Medical Research Council (MRC) and GE Healthcare. With more than 40 highly experienced members of staff at the forefront of PET research and applications, through Imanet, the team offers a fully integrated clinical PET service with a wide range of ^{11}C and ^{18}F radiotracers as well as access to other imaging modalities, including MRI and CT with co-registration capability.

Our services - PET in drug development

Hammersmith Imanet is experienced in more than 100 collaborative and commissioned PET studies with the pharmaceutical industry. We have MRC-alpha-A-graded research programs combined with state-of-the-art imaging facilities.

Hammersmith Imanet has close collaborations with specialist research groups in neurology, cardiology, psychiatry, and oncology, as well as access to large and diverse patient pools from the London Metropolitan area and South East England enabling diverse patient studies.

We perform early phase evaluation of biodistribution, metabolism, time course, and dose ranges of new drug candidates enabling early decision making. Hammersmith Imanet performs Phase 1 studies by working with well-established CROs with familiarity in first-in-man studies and following Good Laboratory Practice (GLP) level bioanalytical services.

Hammersmith Imanet has a full range of services for conducting clinical studies with local project management, data analysis and study reporting.



Photos are courtesy of Hammersmith Imanet



- Tracer development and cGMP compatible PET tracer production
- Radiolabelled drug candidate studies
- Drug occupancy versus dose levels/drug concentration in volunteers at different time points
- Drug effect studies in patients

Equipment and facilities

PET scanners

GE Discovery RX PET/CT
Siemens HR+

Cyclotrons

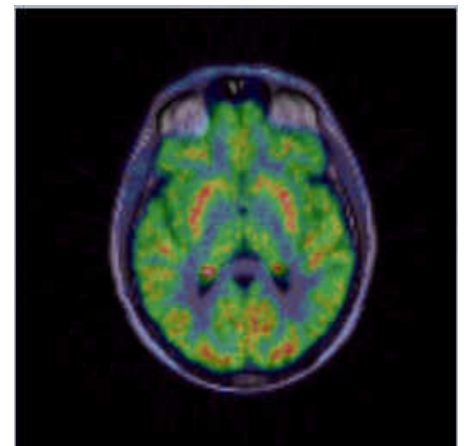
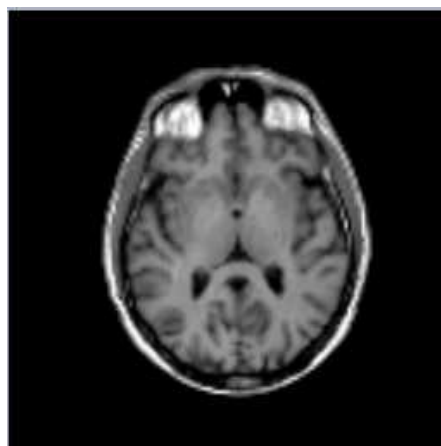
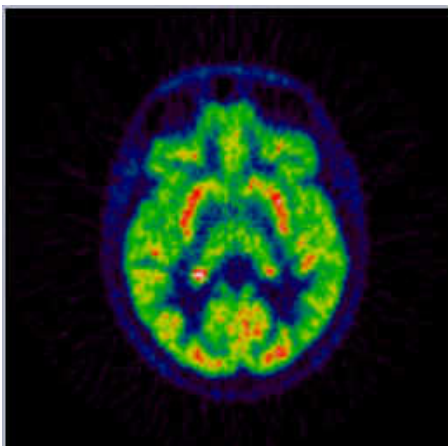
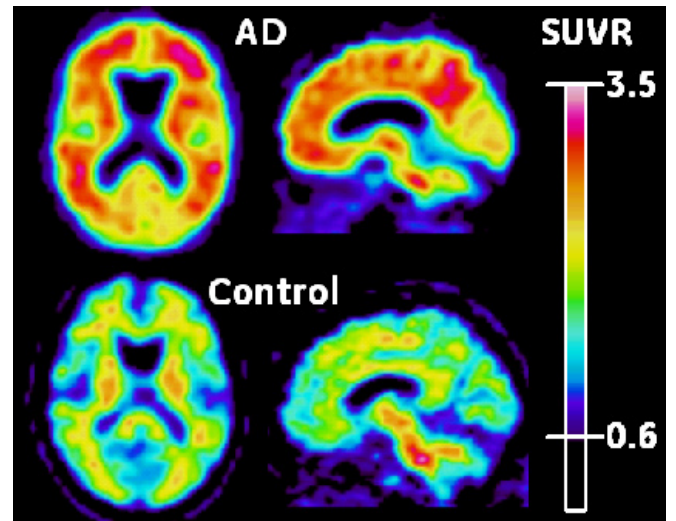
GE PETtrace for ^{11}C and ^{18}F production
IBA 3D for ^{15}O

Hot cells

Eight hot cells with automated synthesis equipment for tracer development and production



Photos are courtesy of Hammersmith Imanet



Healthcare Re-imagined.

GE Healthcare is dedicated to transforming healthcare delivery by driving critical breakthroughs in biology and technology. Our expertise in medical imaging and information technologies, medical diagnostics, patient monitoring systems, drug discovery, and biopharmaceutical manufacturing technologies is enabling healthcare professionals around the world to discover new ways to predict, diagnose and treat disease earlier. We call this model of care "Early Health." The goal: to help clinicians detect disease earlier, access more information and intervene earlier with more targeted treatments, so they can help their patients live their lives to the fullest.

Re-think, Re-discover, Re-invent, Re-imagine.

For more information, please contact

Hammersmith Imanet

Tel. +44 (0) 20 8383 3700

E-mail: hammersmithimanet@ge.com

Other Imanet sites:

Turku Imanet

Tel. +358 (0) 2 4782 662

E-mail: turkuimanet@ge.com

Uppsala Imanet

Tel. +46 (0) 18 66 6808

E-mail: upsala.imanet@ge.com

Homepage: www.imanet.com

E-mail: imanet@ge.com



GE imagination at work